

Node Inspection - 3/07/2019 - SMH.08186234

Date of inspection 3/07/2019	Node name SMH.08186234	Node type Sewer Maintenance Hole	Town Brisbane	Location/Street 4 Meger ST	No. 1.00
Name of operator Hugh	Precipitation No precipitation	Pre-cleaned Yes		Depth to Invert [m] 6.81	Job Number 1

Node material Brickwork	Shape of Access Rectangular	Width of access 1050.00	
-----------------------------------	---------------------------------------	-----------------------------------	--

General comment: **SEWER**

Chamber

Shape Rectangular	Unit length [mm]	Width [mm]
Material Cement (mortar) lining		Height [mm]



Observations

Nr.	Depth [m]	Code	Observation	Remarks
1	0.00	HSTAC	Start feature, access cover.	
2	0.64	HMM	All or part of the mortar from masonry is missing, 5mm from 5 o'clock to 10 o'clock	
3	0.71	HMS	The regularity of the original bond pattern has been disturbed, 5mm from 12 o'clock to 2 o'clock	
4	5.23	HMM	All or part of the mortar from masonry is missing, 10mm from 5 o'clock to 8 o'clock	
5	6.55	HCPCI	A conduit connecting to the maintenance structure, circular, incoming., Ht/Dia # 150mm at 6 o'clock	

Entries (In-Outlets)

No.	Direction	Drop [m]	Clock Position	Shape	Material	Diameter 1 [mm]	Diameter 2 [mm]	Remarks
1	In	6.55	6	Circular		150		
2	Out	6.60	12	Circular		150		

Node Pictures - 3/07/2019 - SMH.08186234

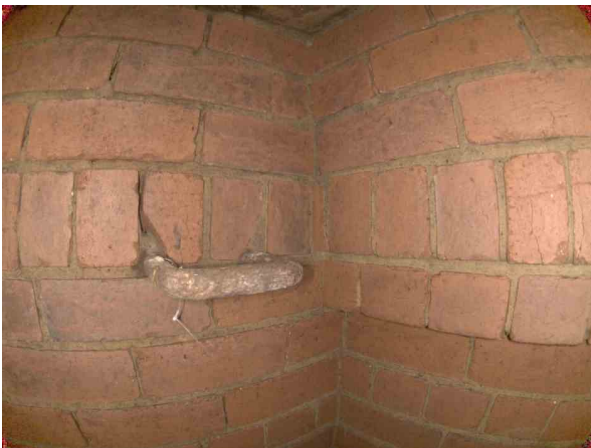
Date of inspection	Node name	Town	Location/Street	Name of operator
3/07/2019	SMH.08186234	Brisbane	4 Meger ST	Hugh



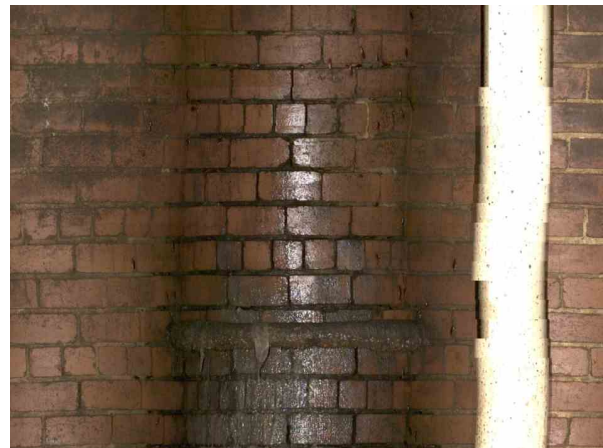
1, , 0.64
 All or part of the mortar from masonry is missing, 5mm from 5 o'clock to 10 o'clock



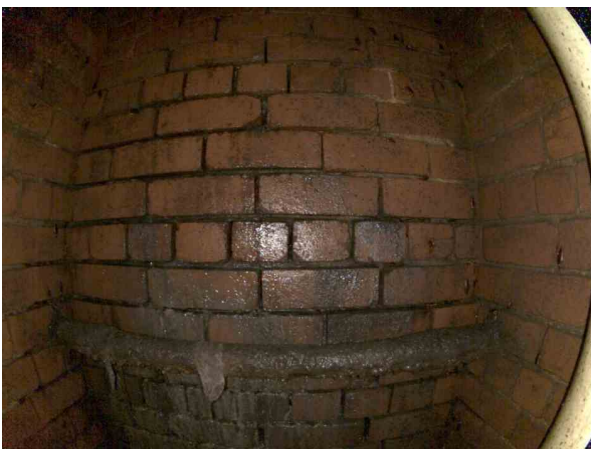
2, , 0.64
 All or part of the mortar from masonry is missing, 5mm from 5 o'clock to 10 o'clock



3, , 0.71
 The regularity of the original bond pattern has been disturbed, 5mm from 12 o'clock to 2 o'clock



4, , 5.23
 All or part of the mortar from masonry is missing, 10mm from 5 o'clock to 8 o'clock



5, , 5.23
 All or part of the mortar from masonry is missing, 10mm from 5 o'clock to 8 o'clock



6, , 6.55
 A conduit connecting to the maintenance structure, circular, incoming., Ht/Dia # 150mm at 6 o'clock

Clever Scan - 3/07/2019 - SMH.08186234

No.	Node name	Alternative ID	Client's Job Ref	Contractor's Job Ref
1	SMH.08186234			

