

Steerable nozzle camera

JETCAM 40 PRO



Unblocking

High pressure
cleaning

Satellite
system

Inspection

Docu-
mentation

and all in just **only one** procedure

An innovation of



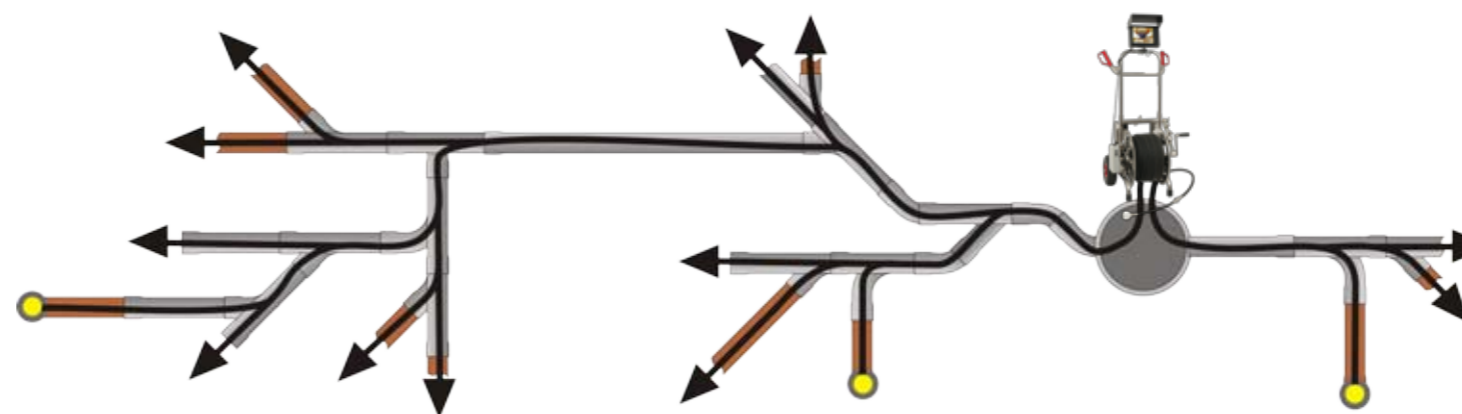
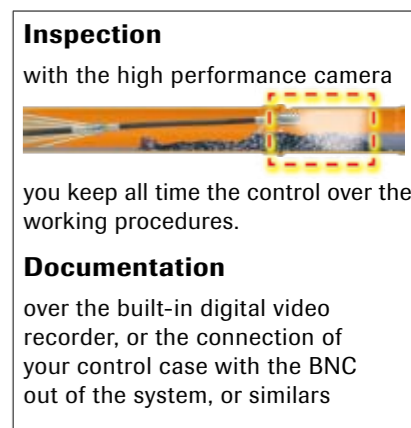
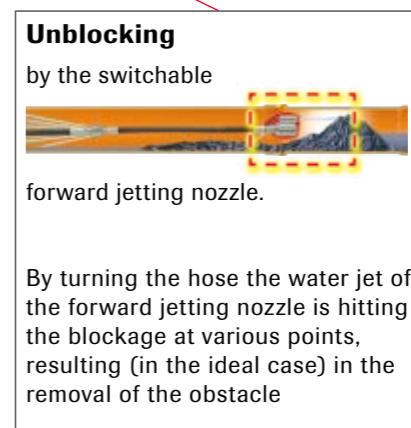
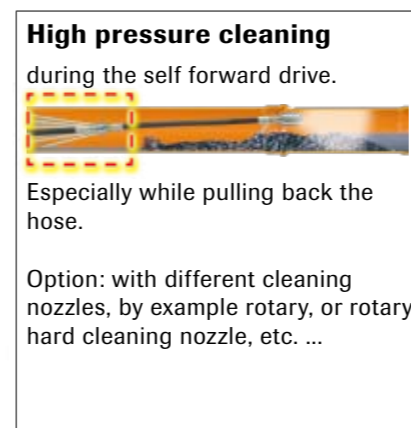
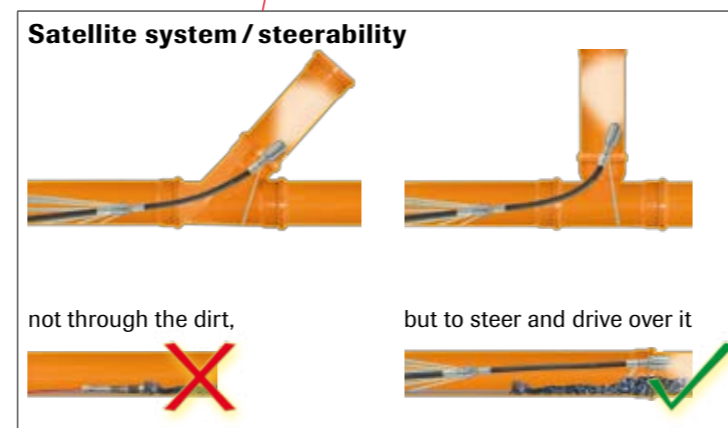
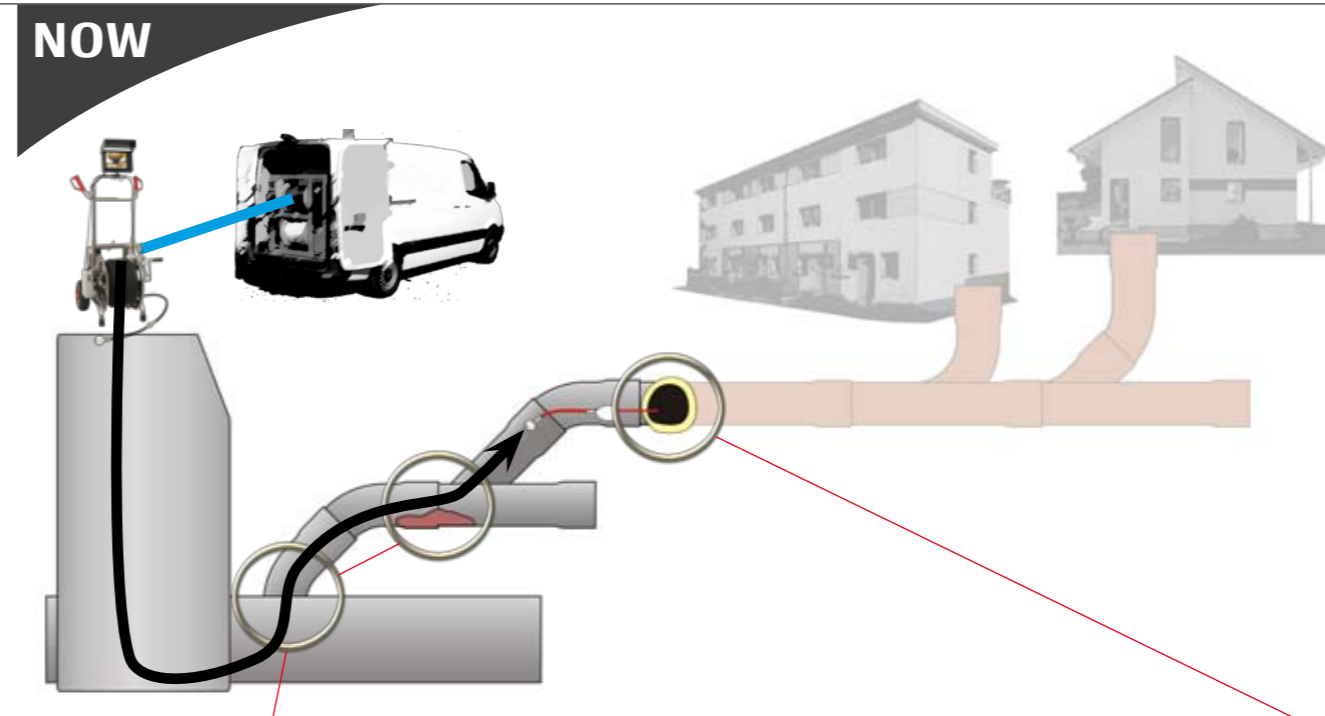
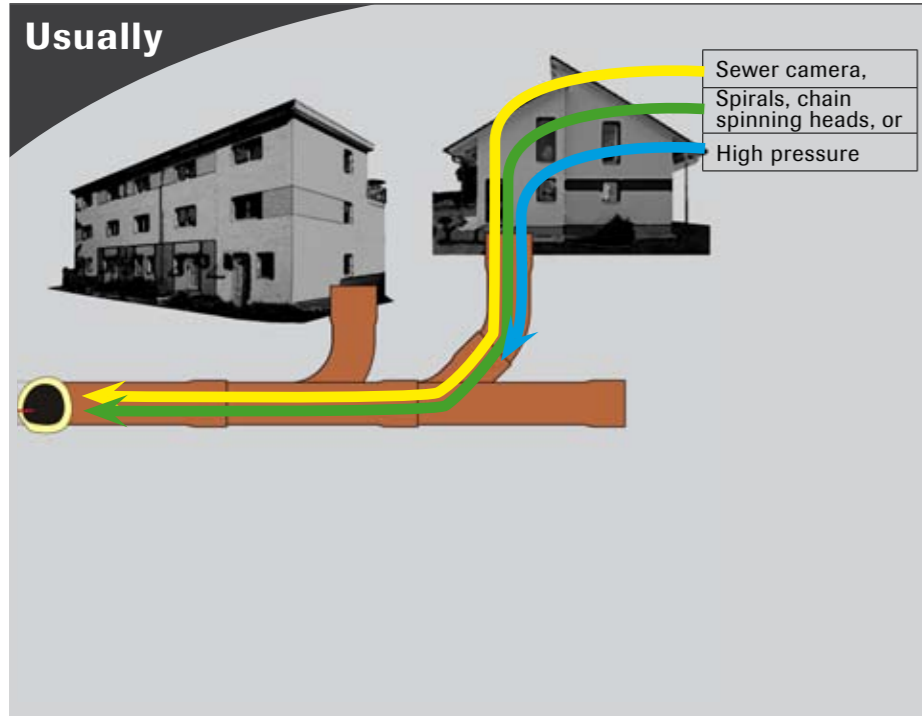
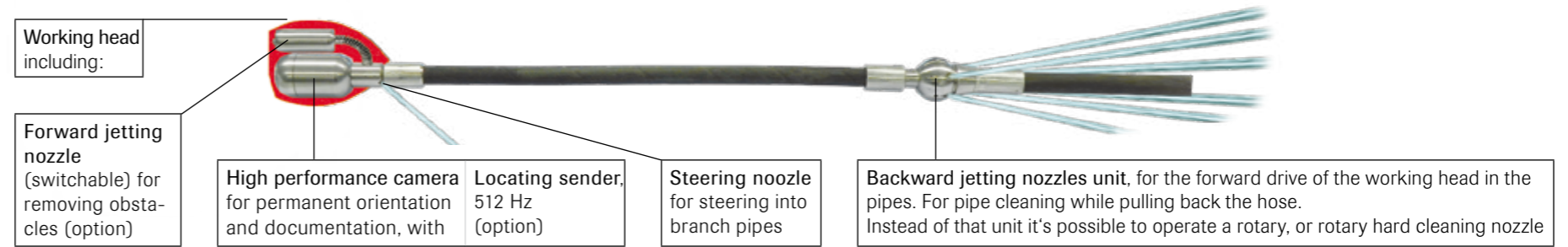
The **JETCAM 40 PRO** is a very efficient **system** for **unblocking**.

Before and after the unblocking, this system serves as **sewer cleaning system**.

It is equipped with a **high performance camera** for having an ideal optical orientation while the several working procedures.

This system changes the manner of sewer maintenance for ever.

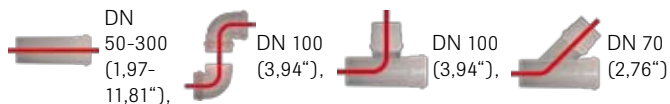
Structure of the most working part of the **JETCAM 40 PRO** :



In only ONE working procedure you do everything where as you need otherwise a lot of time with some other equipment.

Your customers will appreciate your extra service that pays off for you !

Do the work in the whole sewer net in beginning from an only single point. With the **JETCAM 40 PRO where by nothing can stop you.**



EQUIPMENT:

Digital camera system in one wire technology.

A supplementary cable or wire beside the hose is not needed.

Reel:

In stainless steel
To pull out / fold down, with a security clutch
Tires for an easy transport
Stainless steel hose drum, with stopper and fold-down crank handle
Can be operated in the positions: stand up or layed down

Water (high pressure):

HP connection 1/2" for connecting to your jetting machine, with cut off valve. Flow trough: 40 - 100 liters / min.
Manometer. Maximum pressure: 150 bar
Surface hardend high pressure hose. with best sliding qualities. Length NW 10 or 12,5 (1/2"): 35 (114 ft) till 60 meters (229 ft), corresponding of the hose. Other length, other hose diameters, on demand). Flow through: max. 100 l/ min (depending on the hose)

Nozzles:

1x steering nozzle
1x backward jetting nozzles unit (with 6 nozzles). The nozzle inlets (0,8-1,6 mm) itself are variously changeable
1x stabilisation nozzle. Holds the unit straight in the pipe
Option: forward jetting nozzle for unblocking
Option: rotary, rotary hard cleaning nozzle, or others

Camera with plastic impact guard (in a bulb form):

- Camera head at the connectable HP hose unit, in stainless steel (Ø 32 mm [1,26"], length 55 mm [2,17"])
- Waterproofed up to 5 bar
- High performance LED- cold light
- Excellent picture quality, impressive color reproduction
- Camera with DSP (Digital Signal Processing)
- High resolution (350 lines)
- Wide angle objective: 145 °
- Focus: fix
- TV-System: PAL / NTSC

Others:

Battery (12 V DC, working hours: 2 hours), with power supply: 220 V 50 Hz
Meter indication in the camera picture
TFT monitor 5,6 or 8 inch, with built-in digital video recorder. Recording directly on a SD card. SD cards with a capacity of max. 32 GB will be supported. Picture resolution: max. 1024 x 768 pix.
Reinforced video out, 1x

possible Accessories:

Locating sender 512 Hz in the camera head
Umbrella, alignable on a hinge

Dimensions (folded, LxWxH): ca. 60x70x83 cm (23,6x27,5x32,6")

© OPTRONIC 2014. Technical changes, literal errors and other errors excluded. These products can differ in form, color and design. The extraction of contents of this document is without permission of OPTRONIC strictly forbidden.



* : optional equipment



Folded reel for the transport of the system

www.optronic.de

contact@optronic.de