

HDT presents the MRT Unit - Manhole Rehabilitation Technology

Control Unit for blasting and spinning unit

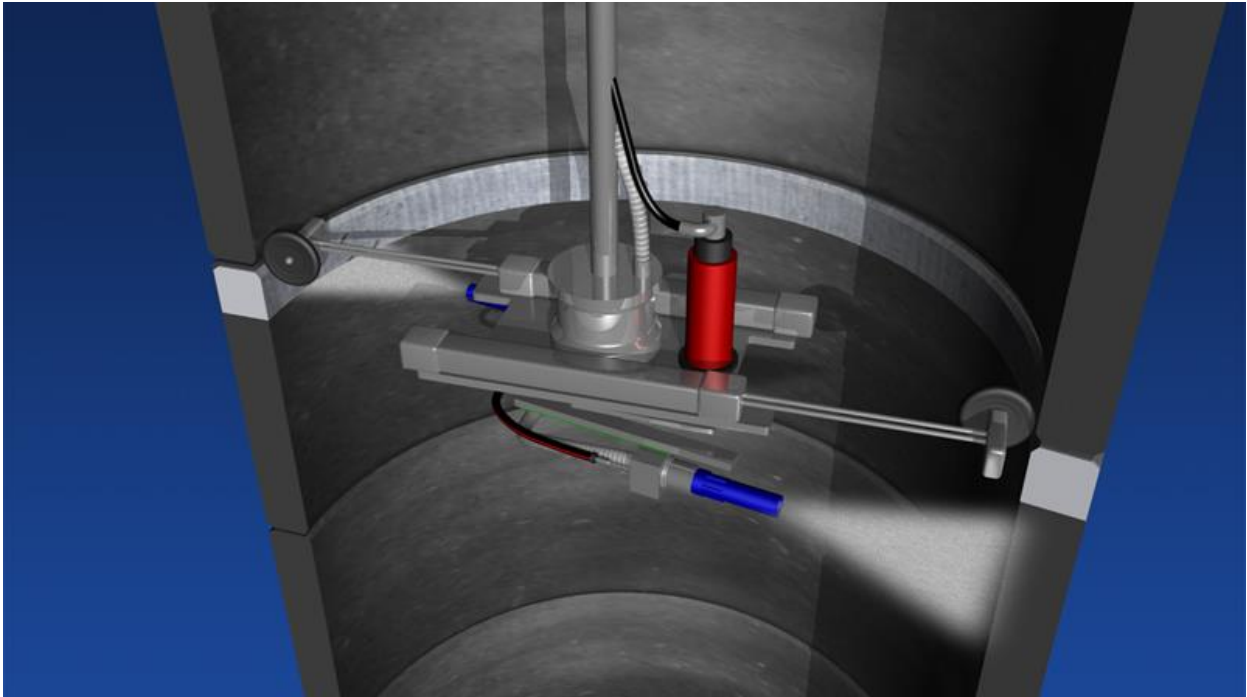
Operation during substrate preparation and coating is carried out from outside the manhole. This elevates the requirement to access into the shaft.

Easy handling and rapid operation on site characterises the system.



Blasting Unit – Automated surface preparation

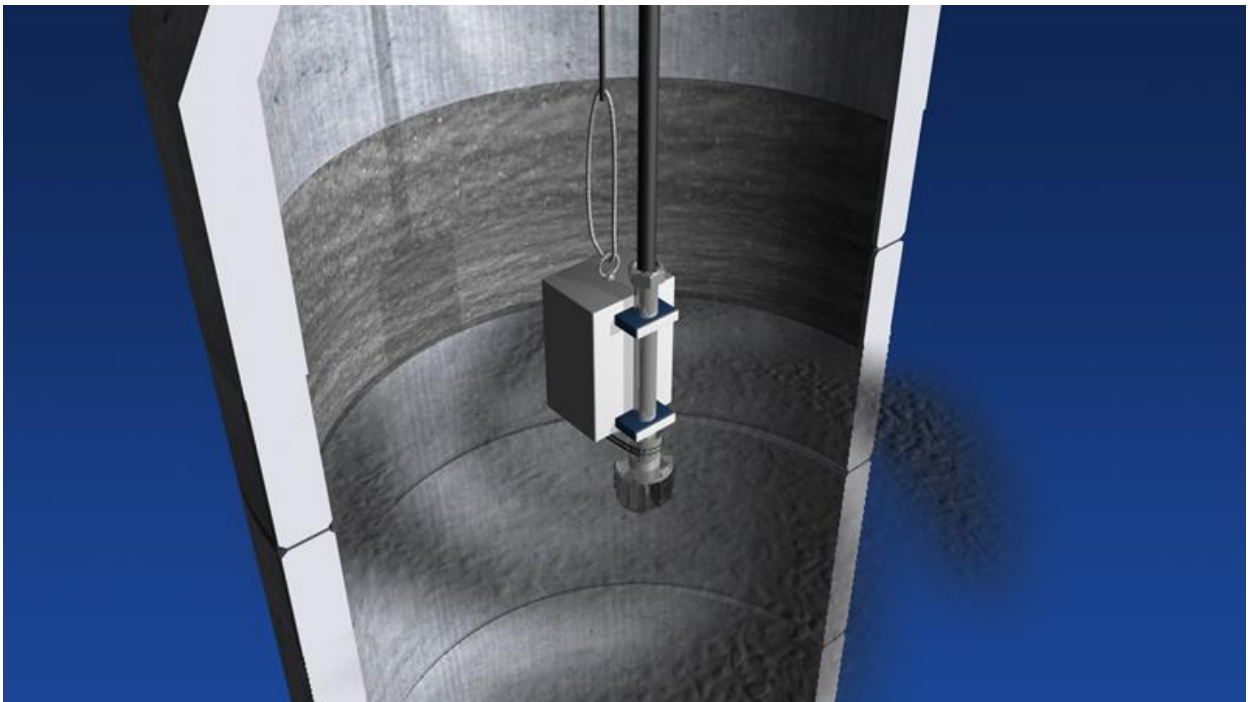
The MRT Blasting Unit is a fully automated and controllable water/granule blasting unit for preparation of manhole surfaces.



Spinning unit – Automated coating of wall surfaces

The MRT Spinning Unit is a fully automated and controllable application head, used for rehabilitation and coating of manholes with Ombran MHP-SP.

The time saving compared to hand application is up to 80%.



HS Coating head

The HS Coating Head is a separate feature for the Spinning Unit. Used for rehabilitation/coating of manholes with Ombran CPS or Ombran FT.

